

OFFICE FOR SUB-LEASE

221 LITTLE CANADA ROAD E, ST. PAUL, MN 55117
4,416 SF

ERSI

ESSENCE REAL ESTATE
SERVICES, INC.



PROPERTY HIGHLIGHTS:

- 4,416 SF AVAILABLE
- PROFESSIONAL OFFICE SPACE
- OPEN FLOOR PLAN ON TWO LEVELS WITH 5 PRIVATE OFFICES
- AMPLE PARKING AVAILABLE
- GREAT ACCESS TO I694, 35E & HWY 36
- MANY AREA AMENITIES INCLUDING: GAS STATIONS, RESTAURANTS, CARIBOU COFFEE, FAST FOOD AND MORE.

OFFICE GROSS RENT
\$ 21.44 SF



CONTACT:

WWW.ESSENCEREALESTATE.COM

JEFF NORDNESS

jeff@essencerealestate.com

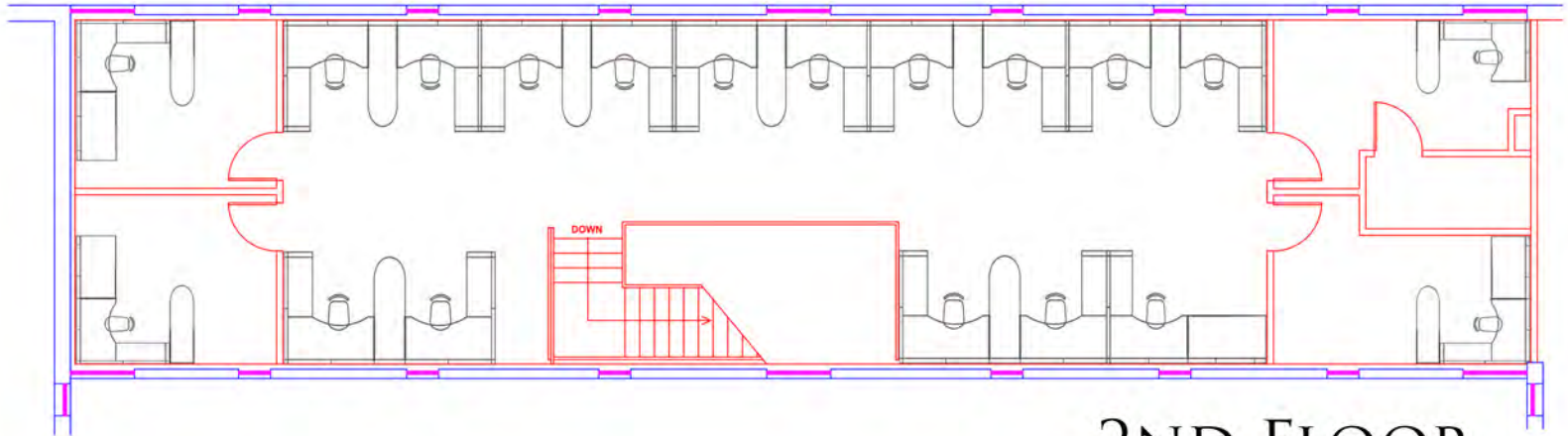
651-341-5044

OFFICE FOR SUB-LEASE

221 LITTLE CANADA ROAD E, ST. PAUL, MN 55117
4,416 SF

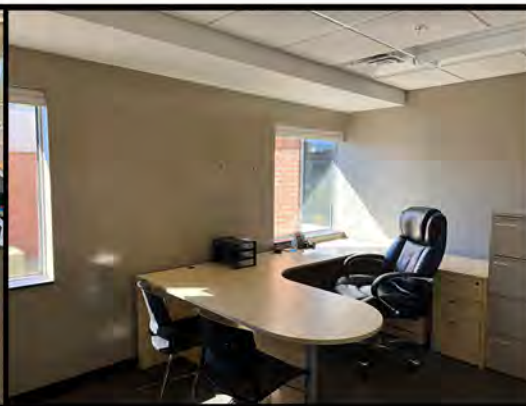
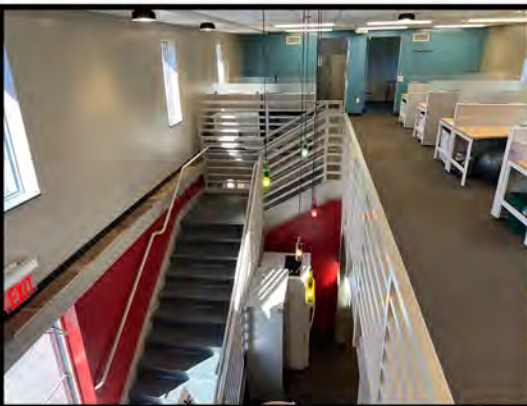
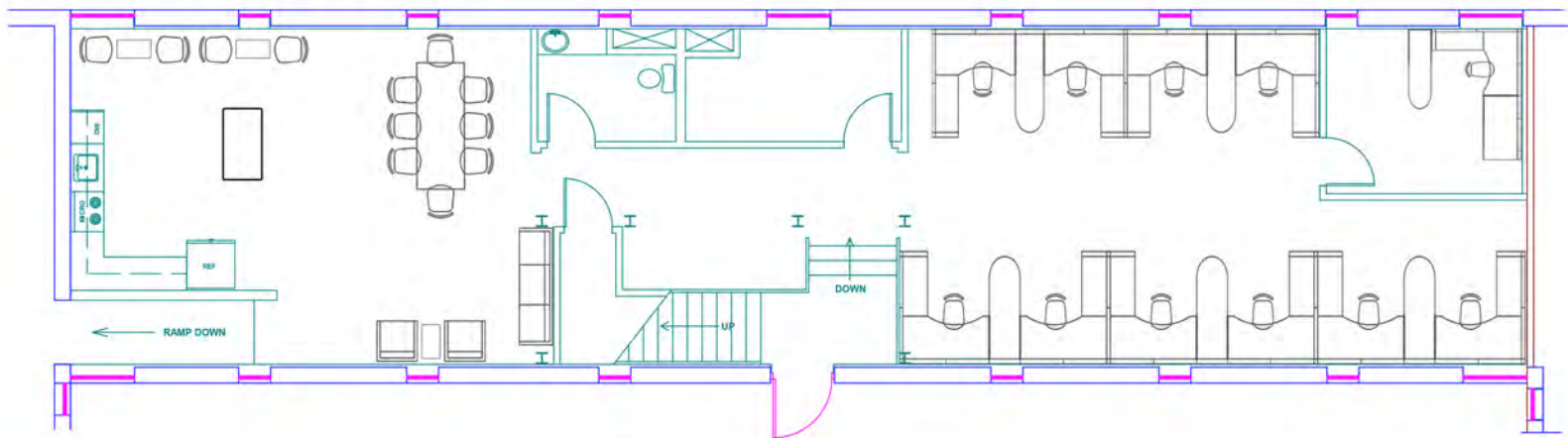
ERSI

ESSENCE REAL ESTATE
SERVICES, INC.



2ND FLOOR

1ST FLOOR



CONTACT:

WWW.ESSENCEREALESTATE.COM

JEFF NORDNESS

jeff@essencerealestate.com

651-341-5044