

OFFICES FOR LEASE

1320 Pearl Street, Boulder, CO 80302

THE CARTWRIGHT BUILDING



ABOUT THE BUILDING

Office suites available for lease at The Cartwright Building, an office / retail building located on the historic Pearl Street Mall. Situated between 13th and 14th across from the Boulder Court House, this building provides all of Downtown Boulder's fantastic shops and restaurants just steps away from your door.

- 836 - 1,047 square feet available
- Upgraded finishes throughout the building
- Rooftop deck area

CHAD HENRY

chenry@wwreynolds.com

DREW WEIMAN

drew@wwreynolds.com

THE
W.W. Reynolds
COMPANIES

P. 303-442-8687

www.wwreynolds.com

1320 PEARL STREET, BOULDER, CO 80302

FIRST FLOOR



UNITS

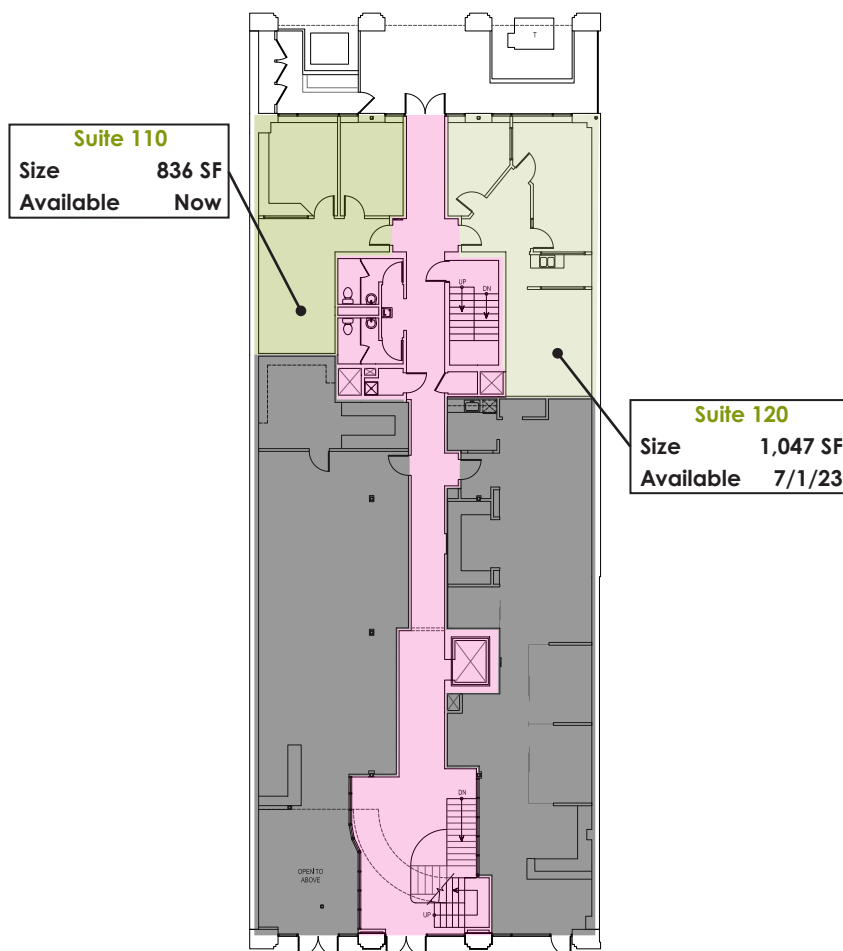
110 | 120



RENT

\$20.00 NNN

FLOOR PLAN



CHAD HENRY

chenry@wwreynolds.com

DREW WEIMAN

drew@wwreynolds.com