

BYRD  
REAL ESTATE  
GROUP



**FOR LEASE**

**\$18,850/mo NNN**

Site Size +/-117,088 sf

GC-150 Zoning

Parcel # 35171.1704

**904 N COLUMBUS**

**CONTACT**

US NOW



Greg Byrd 509.994.4345



Greg@ByrdRealEstateGroup.com



1912 N Division, Ste 201  
Spokane WA 99207

**37,643 SF BLDG**

\*13,500 SF OFFICE

\*24,143 SF WAREHOUSE

2 - 14'W X 12'H GRADE OHD

2 - 14'W X 14'H GRADE OHD

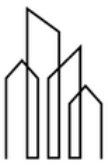
3 PHASE POWER

15' CLEAR HEIGHT

[www.ByrdRealEstateGroup.com](http://www.ByrdRealEstateGroup.com)

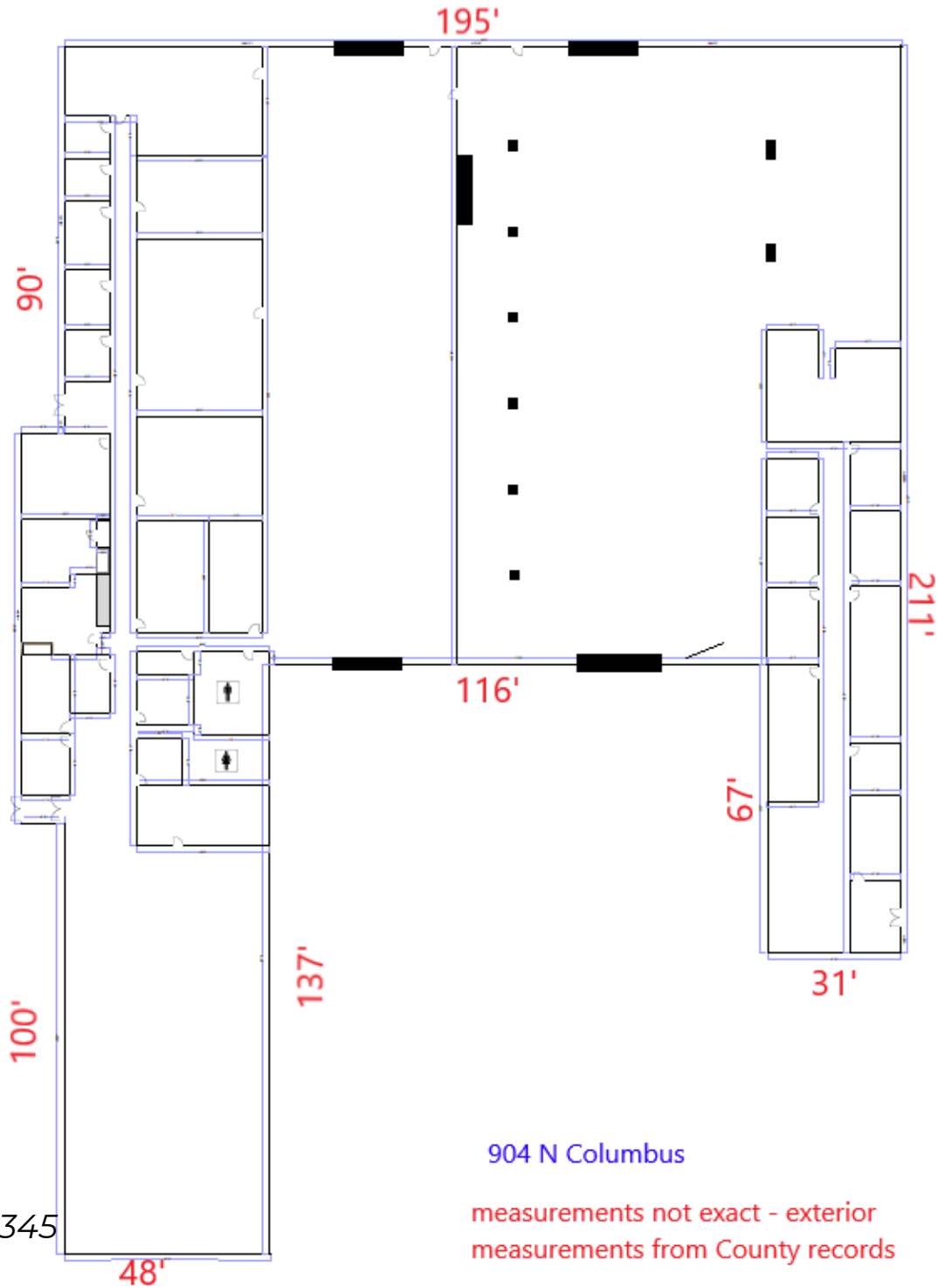
**PRODUCING PROPERTY SOLUTIONS**

All information is furnished by the Owner &/or Broker and believed to be complete and correct. The Owner &/or Broker cannot be responsible for changes, errors, omissions or withdrawals of this offering. The above information is from sources deemed reliable but should be verified by parties that could be adversely affected by any statements or information. This is not an offering of sub-agency, with commission splits to be determined.



BYRD  
REAL ESTATE  
GROUP

# 904 N COLUMBUS



904 N Columbus

measurements not exact - exterior  
measurements from County records

## CONTACT

US NOW



Greg Byrd 509.994.4345



Greg@ByrdRealEstateGroup.com



1912 N Division, Ste 201  
Spokane WA 99207

[www.ByrdRealEstateGroup.com](http://www.ByrdRealEstateGroup.com)

**PRODUCING PROPERTY SOLUTIONS**

All information is furnished by the Owner &/or Broker and believed to be complete and correct. The Owner &/or Broker cannot be responsible for changes, errors, omissions or withdrawals of this offering. The above information is from sources deemed reliable but should be verified by parties that could be adversely affected by any statements or information. This is not an offering of sub-agency, with commission splits to be determined.



