



FOR SUBLEASE

Site Size: A portion of
+/- 38 Acres

Warehouse
\$0.40/sf NNN

Zoned: General
Commercial

**1603 S. GARFIELD RD
AIRWAY HEIGHTS**

Parcel :
A portion of 15252.0172

CONTACT

US NOW



Doug Byrd 509.216.6575



Doug@ByrdRealEstateGroup.com



1912 N Division, Ste 201
Spokane WA 99207

+/- 12,000 - 24,000 SF WHSE

- UNITS 5 & 6 AVAILABLE FOR SUBLEASE
- SECURED YARD
- EACH UNIT HAS AN OHD - 12'X16'
- CLEAR HEIGHT 18'
- VAPOR BARRIER INSULATION
- MOBILE DOCK ON SITE

www.ByrdRealEstateGroup.com

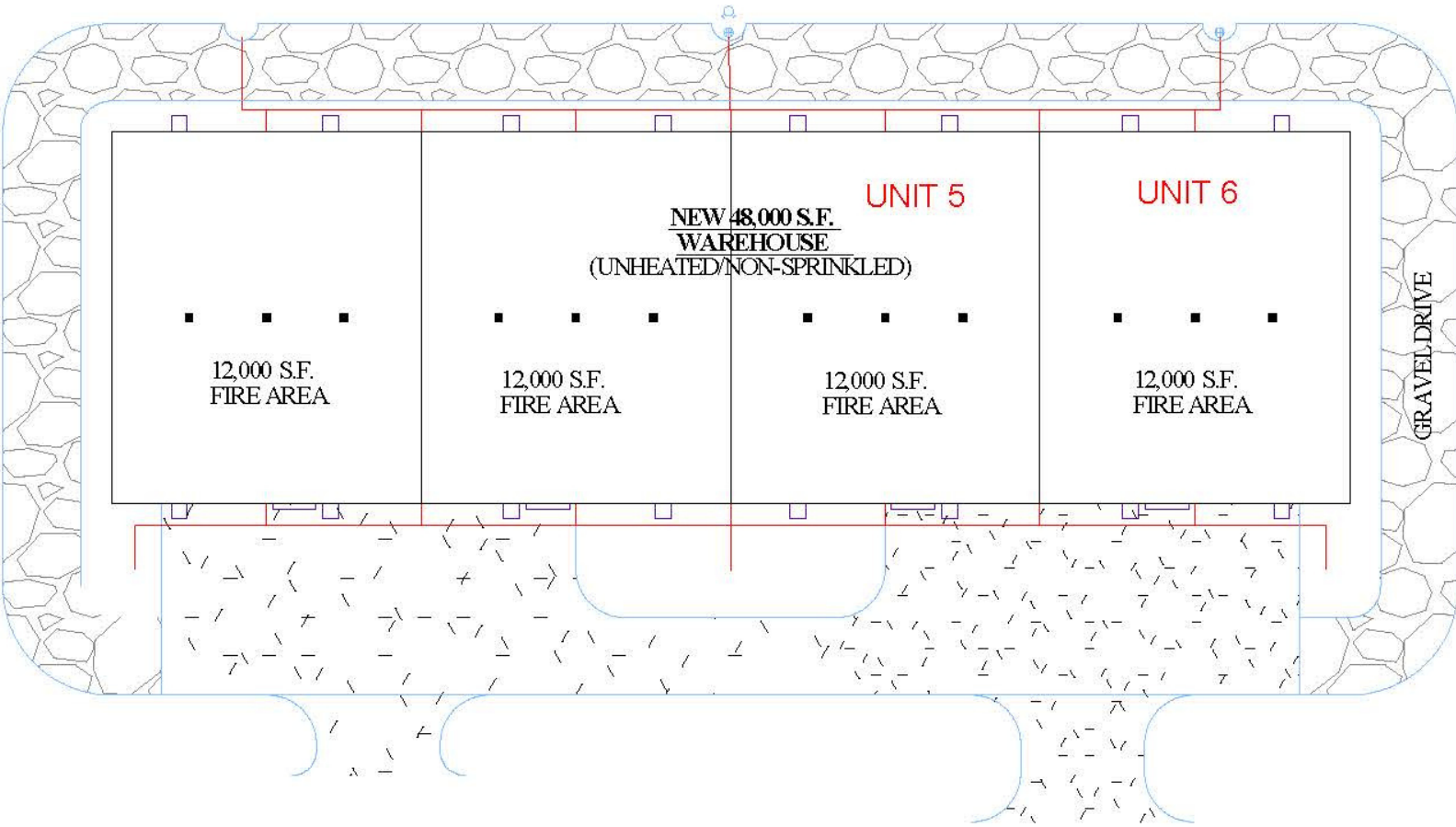
PRODUCING PROPERTY SOLUTIONS

All information is furnished by the Owner &/or Broker and believed to be complete and correct. The Owner &/or Broker cannot be responsible for changes, errors, omissions or withdrawals of this offering. The above information is from sources deemed reliable but should be verified by parties that could be adversely affected by any statements or information. This is not an offering of sub-agency, with commission splits to be determined.



BYRD
REAL ESTATE
GROUP

1603 S. GARFIELD RD



CONTACT

US NOW



Doug Byrd 509.216.6575



Doug@ByrdRealEstateGroup.com



1912 N Division, Ste 201
Spokane WA 99207

www.ByrdRealEstateGroup.com

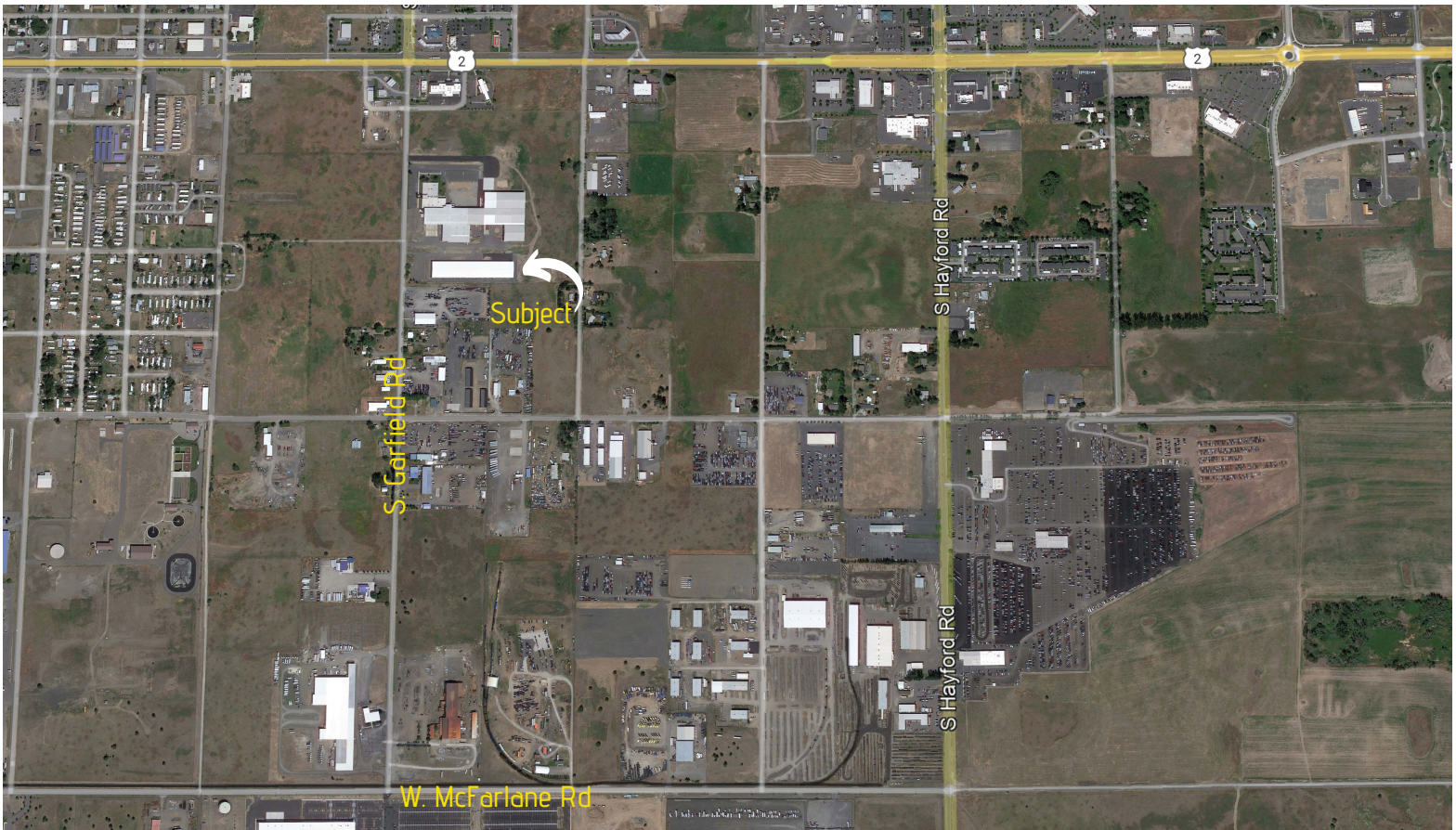
PRODUCING PROPERTY SOLUTIONS

All information is furnished by the Owner &/or Broker and believed to be complete and correct. The Owner &/or Broker cannot be responsible for changes, errors, omissions or withdrawals of this offering. The above information is from sources deemed reliable but should be verified by parties that could be adversely affected by any statements or information. This is not an offering of sub-agency, with commission splits to be determined.



BYRD
REAL ESTATE
GROUP

1603 S. GARFIELD RD



www.ByrdRealEstateGroup.com

PRODUCING PROPERTY SOLUTIONS

All information is furnished by the Owner &/or Broker and believed to be complete and correct. The Owner &/or Broker cannot be responsible for changes, errors, omissions or withdrawals of this offering. The above information is from sources deemed reliable but should be verified by parties that could be adversely affected by any statements or information. This is not an offering of sub-agency, with commission splits to be determined.