



FOR SALE

**Warehouse
\$625,500**

Site Size: +/- 9,230/SF

Zoned: Light Industrial

**310 N. CRESTLINE ST
SPOKANE, WA**

**Parcel Number:
35164.1616**

CONTACT

US NOW



Doug Byrd 509.216.6575



Doug@ByrdRealEstateGroup.com



**1912 N Division, Ste 201
Spokane WA 99207**

+/- 5,119 SF BUILDING

- **MAIN FLOOR: +/- 4,352/SF**
- **MEZZANINE: +/- 767/SF**
- **1 - GRADE LEVEL 12'W X 12'H OHD**
- **3-PHASE POWER - 220V**

www.ByrdRealEstateGroup.com

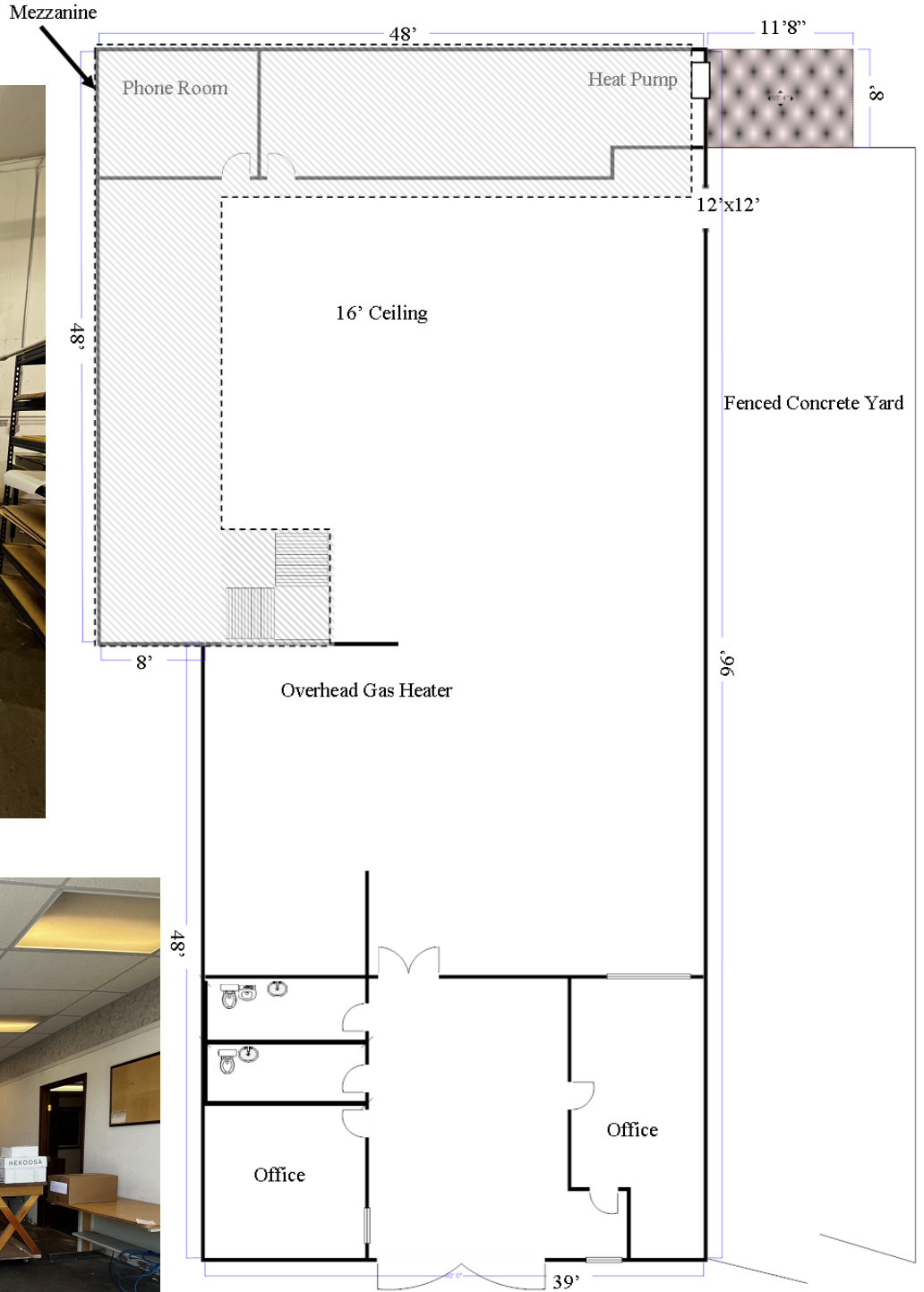
PRODUCING PROPERTY SOLUTIONS

All information is furnished by the Owner &/or Broker and believed to be complete and correct. The Owner &/or Broker cannot be responsible for changes, errors, omissions or withdrawals of this offering. The above information is from sources deemed reliable but should be verified by parties that could be adversely affected by any statements or information. This is not an offering of sub-agency, with commission splits to be determined.



BYRD
REAL ESTATE
GROUP

310 N. CRESTLINE ST.



www.ByrdRealEstateGroup.com

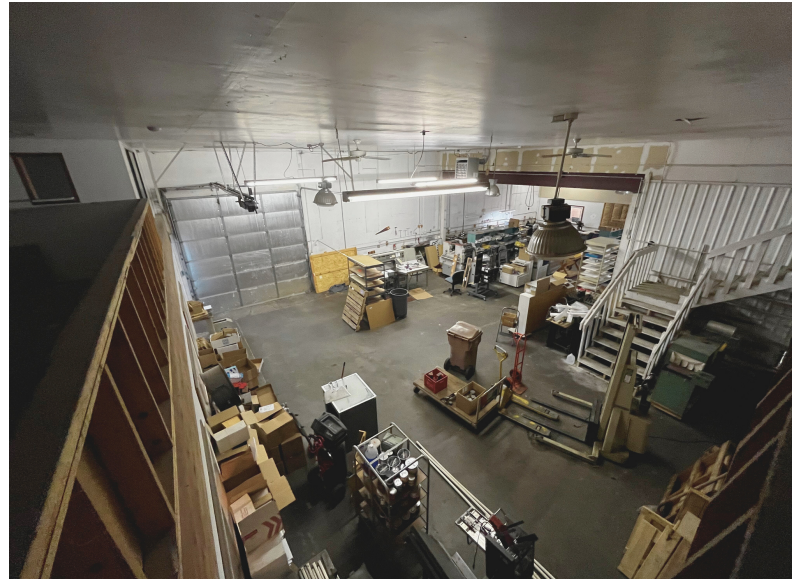
PRODUCING PROPERTY SOLUTIONS

All information is furnished by the Owner &/or Broker and believed to be complete and correct. The Owner &/or Broker cannot be responsible for changes, errors, omissions or withdrawals of this offering. The above information is from sources deemed reliable but should be verified by parties that could be adversely affected by any statements or information. This is not an offering of sub-agency, with commission splits to be determined.



BYRD
REAL ESTATE
GROUP

310 N. CRESTLINE ST.



CONTACT US NOW



Doug Byrd
509.216.6575



Doug@ByrdReal
EstateGroup.com



1912 N Division, Ste
201, Spokane WA 99207

www.ByrdRealEstateGroup.com

PRODUCING PROPERTY SOLUTIONS

All information is furnished by the Owner &/or Broker and believed to be complete and correct. The Owner &/or Broker cannot be responsible for changes, errors, omissions or withdrawals of this offering. The above information is from sources deemed reliable but should be verified by parties that could be adversely affected by any statements or information. This is not an offering of sub-agency, with commission splits to be determined.