



BYRD
REAL ESTATE
GROUP



FOR SALE

\$995,000

Site Size +/-27,285 sf

Public Zone
(In the process of
re-zoning to C-1A)

**1208 S LUNDSTROM
AIRWAY HEIGHTS**

Parcels # 15233.0101
& 15233.0118

+/- 7,691 SF

CONTACT

US NOW



Doug Byrd 509.216.6575
Sharon Reynolds
509.326.8080



Doug@ByrdRealEstateGroup.com
Sharon@ByrdRealEstateGroup.com



1912 N Division, Ste 201
Spokane WA 99207

- +/- 3,000 SF OFFICE
- +/- 1,283 SF UPPER LEVEL
- +/- 3,408 SF WAREHOUSE
- 5 OHD
 - 3 - 10'H X 12'W
 - 1 - 12'H X 12'W
 - 1 - 12'H X 24'W
- LOCATED IN AN OPPORTUNITY ZONE
- NOT AVAILABLE FOR OCCUPANCY
PRIOR TO MAY 2025 - CLB FOR INFO

www.ByrdRealEstateGroup.com

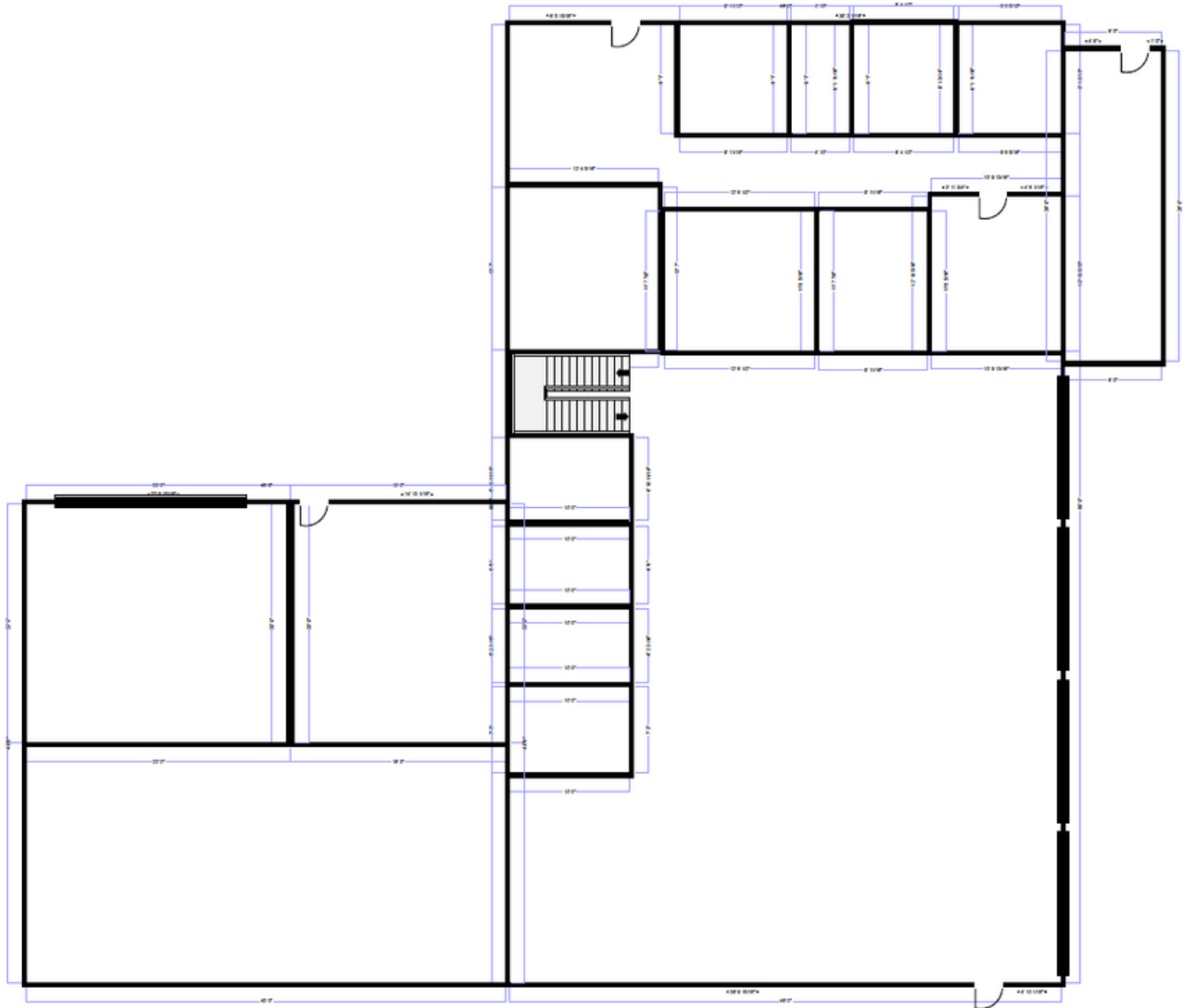
PRODUCING PROPERTY SOLUTIONS

All information is furnished by the Owner &/or Broker and believed to be complete and correct. The Owner &/or Broker cannot be responsible for changes, errors, omissions or withdrawals of this offering. The above information is from sources deemed reliable but should be verified by parties that could be adversely affected by any statements or information. This is not an offering of sub-agency, with commission splits to be determined.



BYRD
REAL ESTATE
GROUP

1208 S LUNDSTROM



CONTACT

US NOW



Doug Byrd 509.216.6575

Sharon Reynolds

509.326.8080



Doug@ByrdRealEstateGroup.com

Sharon@ByrdRealEstateGroup.com



1912 N Division, Ste 201

Spokane WA 99207

www.ByrdRealEstateGroup.com

PRODUCING PROPERTY SOLUTIONS

All information is furnished by the Owner &/or Broker and believed to be complete and correct. The Owner &/or Broker cannot be responsible for changes, errors, omissions or withdrawals of this offering. The above information is from sources deemed reliable but should be verified by parties that could be adversely affected by any statements or information. This is not an offering of sub-agency, with commission splits to be determined.