

FOR LEASE



SHOREVIEW OFFICE PARK

1000 COUNTY ROAD E ● SHOREVIEW, MN 55126

- 2,198 SF AVAILABLE
- PERFECT FOR PROFESSIONAL OFFICE, MEDICAL OR SERVICE
- LOCATED JUST WEST OF LEXINGTON AVENUE & JUST SOUTH OF I-694
- AMPLE ON-SITE PARKING
- MANY AREA AMENITIES INCLUDING: CARIBOU COFFEE, YMCA, TARGET, AND NUMEROUS OTHER RETAIL STORES & RESTAURANTS

CONTACT:

WWW.ESSENCEREALESTATE.COM

JEFF NORDNESS
jeff@essencerealestate.com
651-341-5044

SHOREVIEW OFFICE PARK

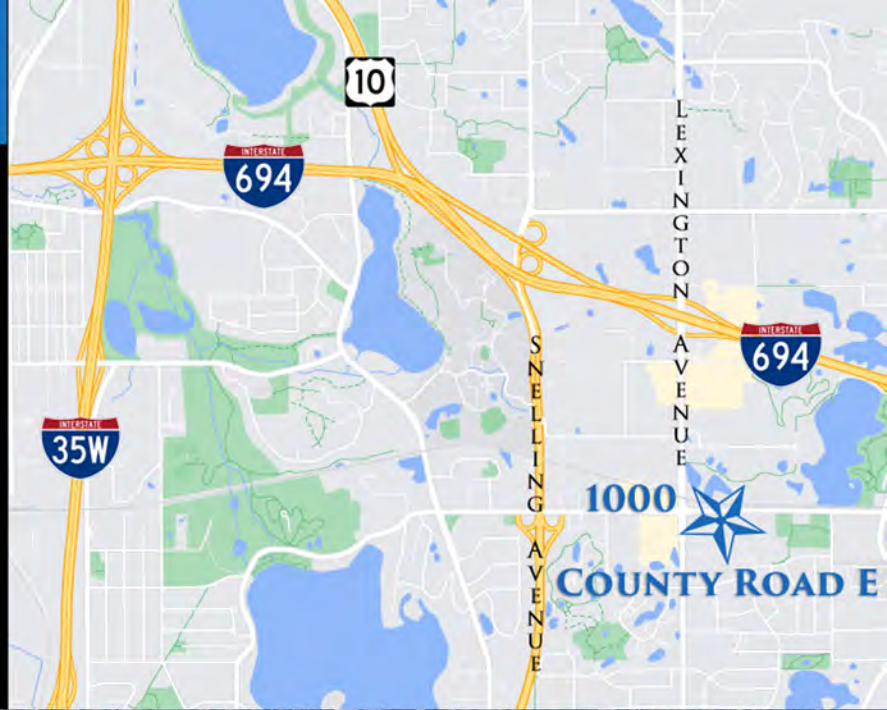
1000 COUNTY ROAD E ● SHOREVIEW, MN 55126

BUILDING DETAILS:

OFFICE NET RENT: \$13.00 SF
2023 EST. OP. EXP. \$9.55 SF

SPACE AVAILABLE:
SUITE 230 2,198 SF

**APPROX. \$4,130.00
A MONTH**



**EXCELLENT SPACE IN THIS BUSY
SHOREVIEW COMMUNITY**

ERSI

ESSENCE
REAL ESTATE
SERVICES INC.

JEFF NORDNESS

651-341-5044

jeff@essencerealestate.com

COMMERCIAL REAL ESTATE SINCE 1990

OFFICE: 651-482-1871

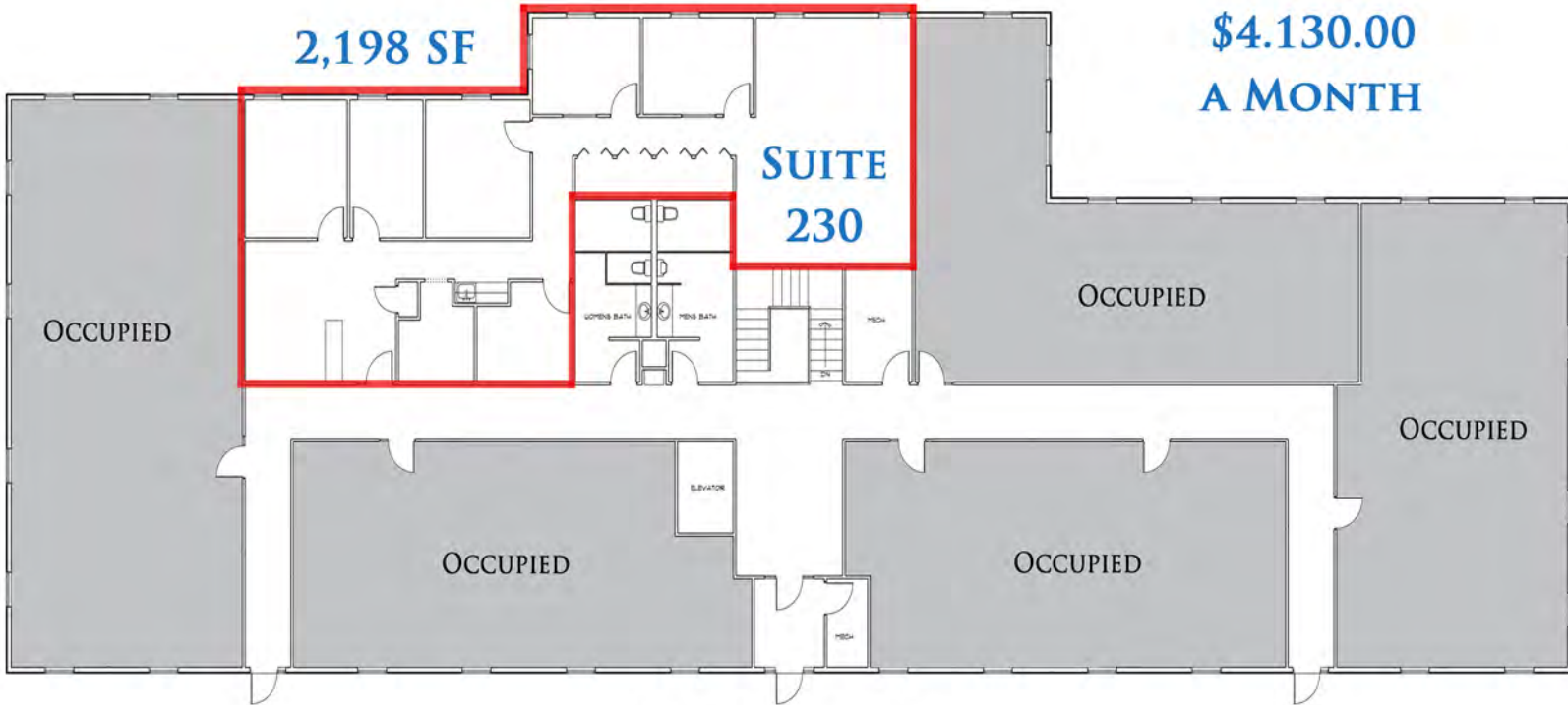
SHOREVIEW OFFICE PARK

1000 COUNTY ROAD E • SHOREVIEW, MN 55126

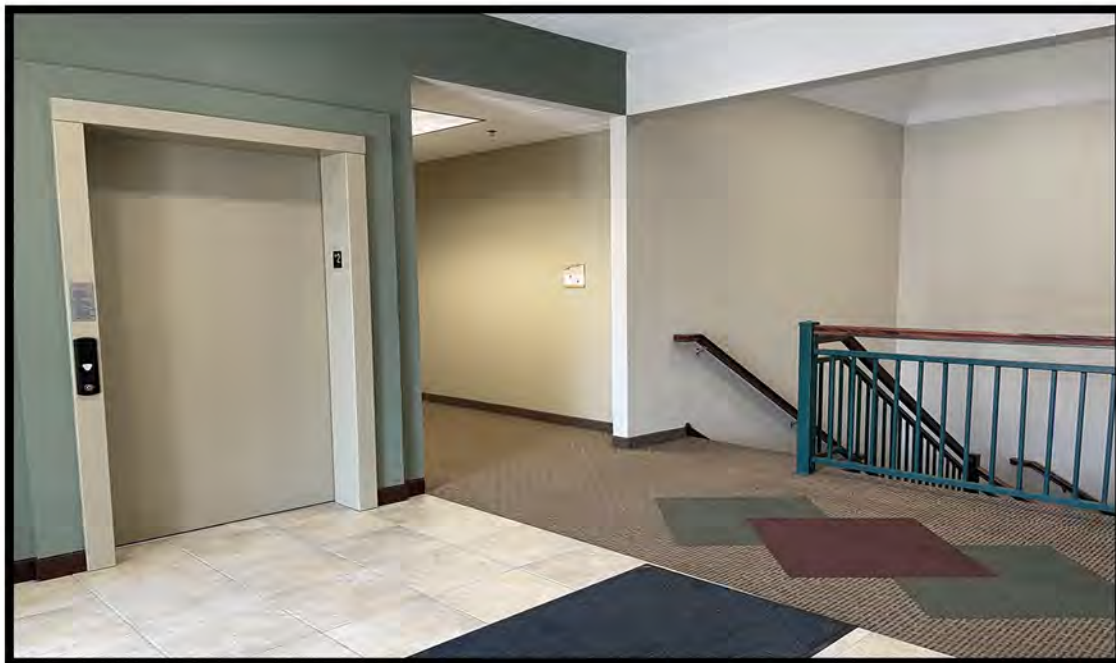
APPROX.
\$4,130.00
A MONTH

2,198 SF

SUITE
230



MAIN LEVEL



ERSI

ESSENCE
REAL ESTATE
SERVICES INC.

COMMERCIAL REAL ESTATE SINCE 1990

JEFF NORDNESS

651-341-5044

jeff@essencerealestate.com

OFFICE: 651-482-1871