

ERSI

ESSENCE
REAL ESTATE
SERVICES INC.

COMMERCIAL REAL ESTATE SINCE 1990

FOR LEASE



1900 - 7TH ST. NW

NEW BRIGHTON • MN 55112

- 693 SF AVAILABLE
- \$18.00 SF GROSS RENT
- LOCATED RIGHT OFF OF HWY 694 AND SILVER LAKE ROAD
- PERFECT FOR SMALL OFFICE, GROUP OR CLASSROOM
- AREA AMENITIES INCLUDE: COFFEE, GAS STATIONS, RETAIL, MCDONALDS, GROCERY, AND MANY MORE

CONTACT:

WWW.ESSENCEREALESTATE.COM

JEFF NORDNESS

jeff@essencerealestate.com

651-341-5044

1900 - 7TH STREET

NEW BRIGHTON • MN 55112

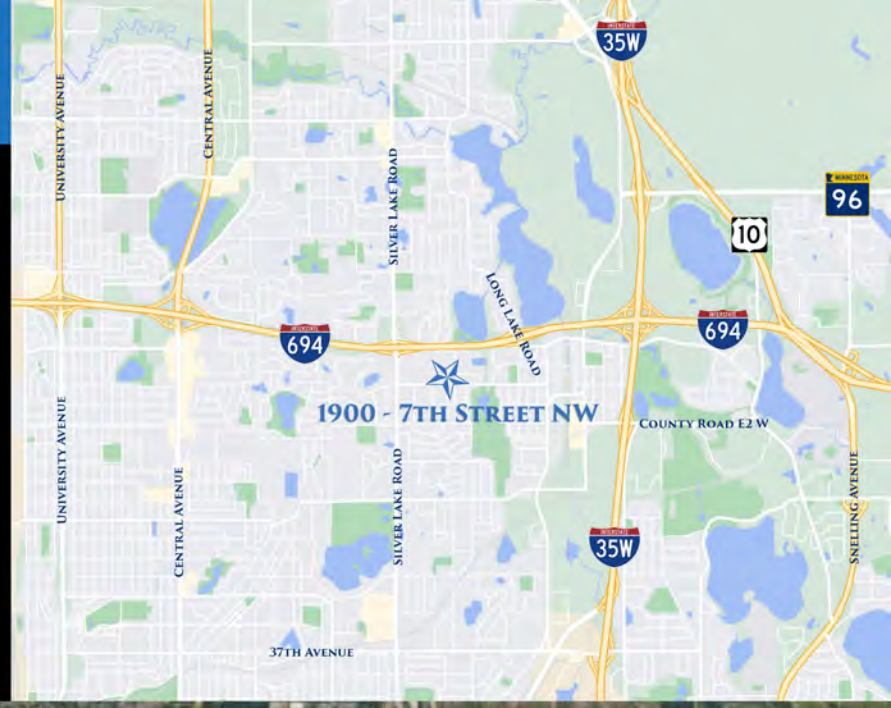
BUILDING DETAILS:

OFFICE GROSS RENT: \$18.00 SF

SPACE AVAILABLE:

SUITE 116 693 SF

APPROX. \$1,040.00
A MONTH



GREAT SMALL SPACE IN NEW BRIGHTON CHURCH

ERSI

ESSENCE
REAL ESTATE
SERVICES INC.

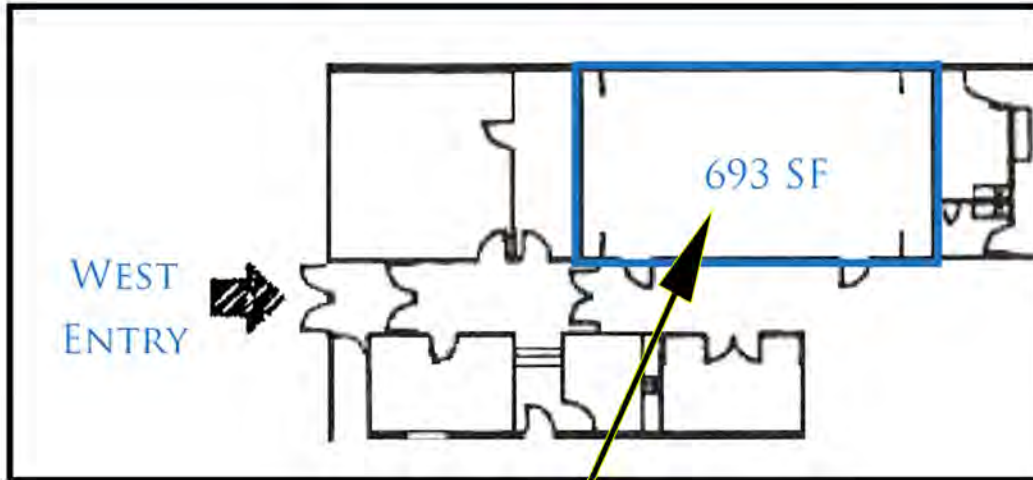
JEFF NORDNESS
651-341-5044
jeff@essencerealestate.com

COMMERCIAL REAL ESTATE SINCE 1990

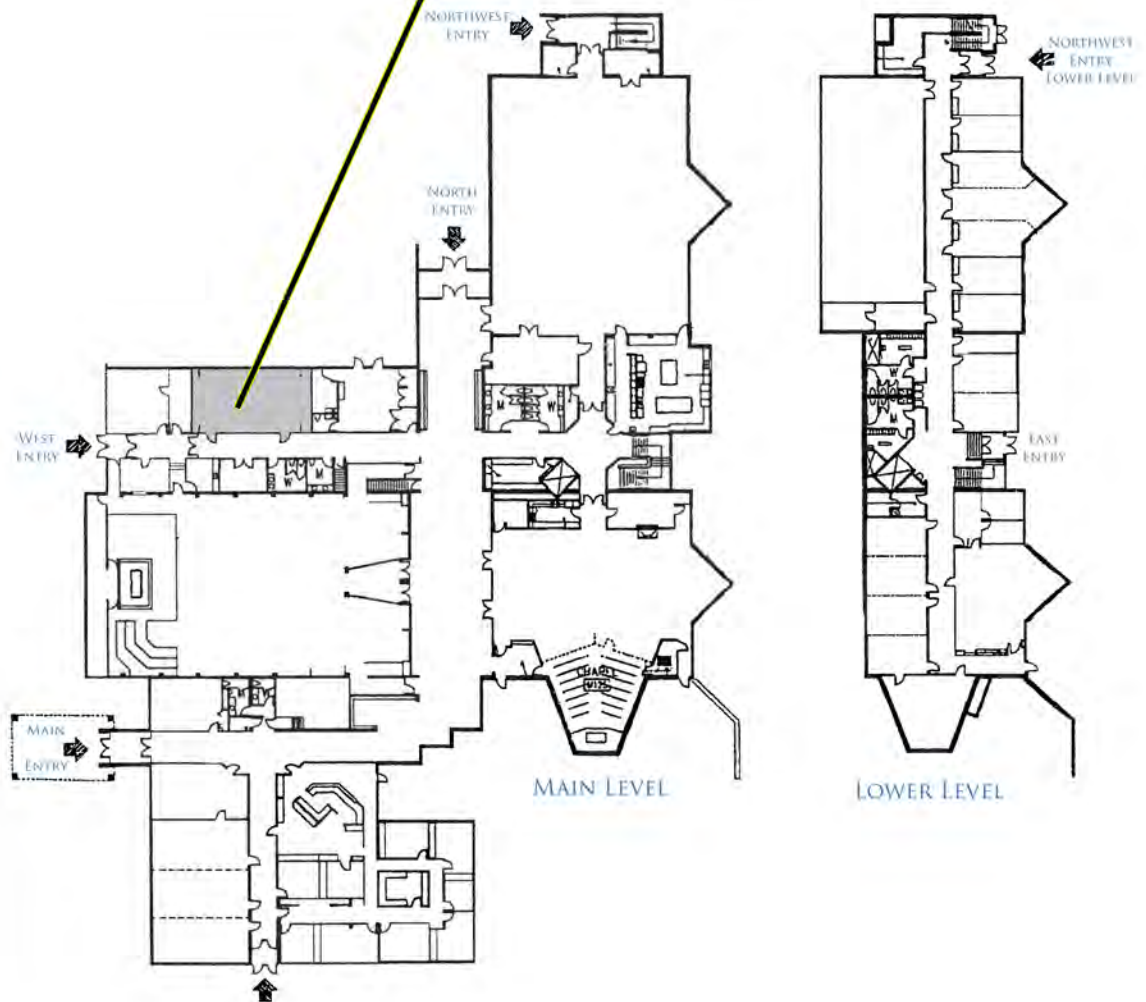
OFFICE: 651-482-1871

1900 - 7TH STREET NW

NEW BRIGHTON • MN 55112



APPROX.
\$1,040.00
A MONTH



SMALL OFFICE
SPACE AVAILABLE
INSIDE A NEW
BRIGHTON
CHURCH

ERSI

ESSENCE
REAL ESTATE
SERVICES INC.

COMMERCIAL REAL ESTATE SINCE 1990

JEFF NORDNESS

651-341-5044

jeff@essencerealestate.com

OFFICE: 651-482-1871