



MORGAN STREET FORMER ATM

4205 SW Morgan Street
Seattle, WA 98136

Tim Weber | Don Whittles
Blake Weber

First Western Properties—Tacoma Inc. | 253.472.0404
6402 Tacoma Mall Blvd, Tacoma, WA 98409 | fwp-inc.com

FOR LEASE

- CALL FOR DETAILS
- FORMER BANK OF AMERICA ATM
- ALL INFRASTRUCTURE EXISTING

- Adjacent to West Seattle Thriftway
- Signalized intersection
- High visibility single tenant pad
- Located in the heart of West Seattle's quaint neighborhood
- Mix of national & local tenants
- Dense neighborhood with strong demographics



Population



Average HH Income



Daytime Population

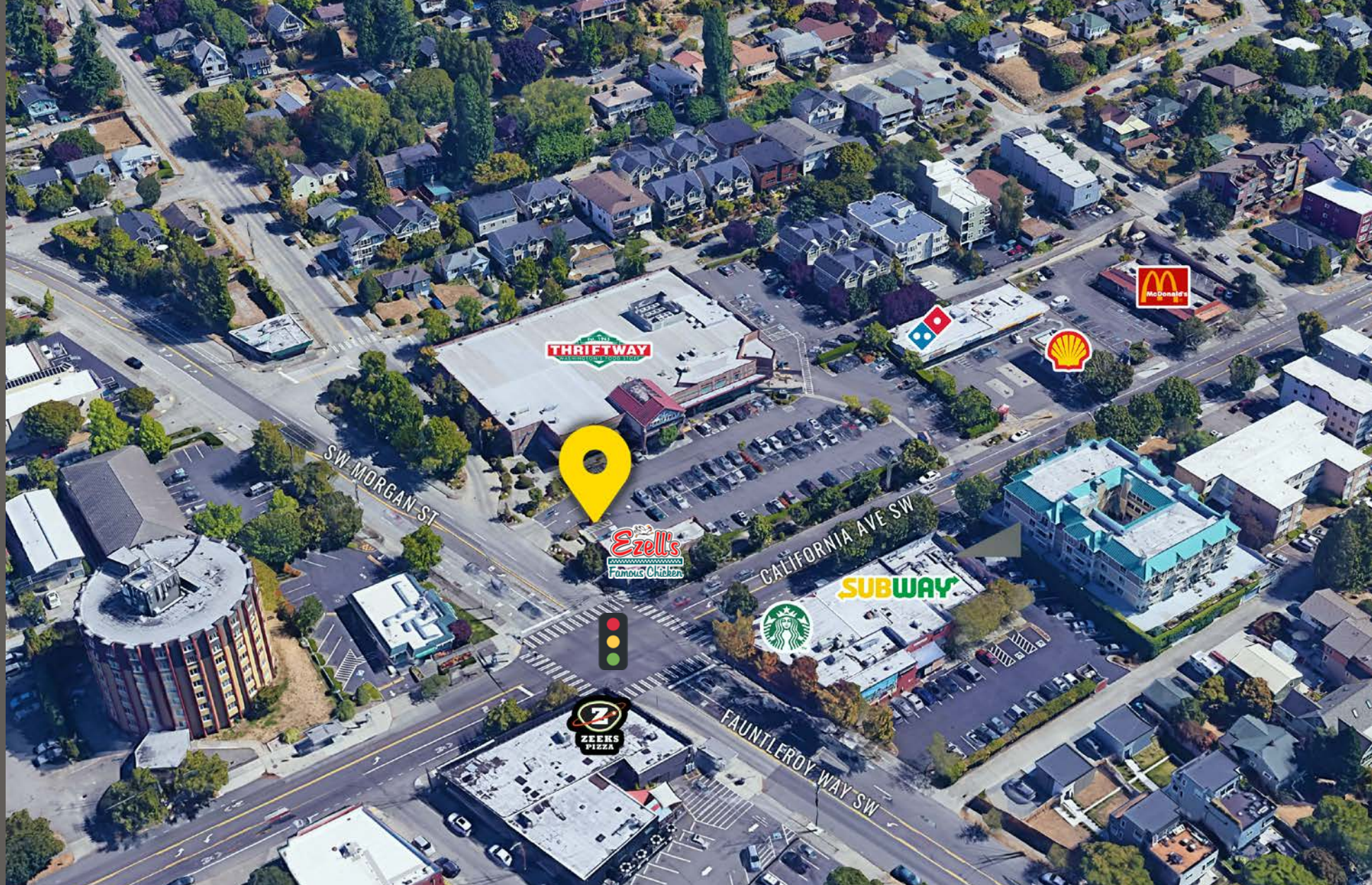
Regis - 2023

	Population	Average HH Income	Daytime Population
Mile 1	23,417	\$176,536	9,763
Mile 3	101,833	\$170,924	72,010
Mile 5	218,914	\$151,487	231,322

NEARBY TENANTS



LOCATION DETAILS



Located moments from
the Seattle Waterfront

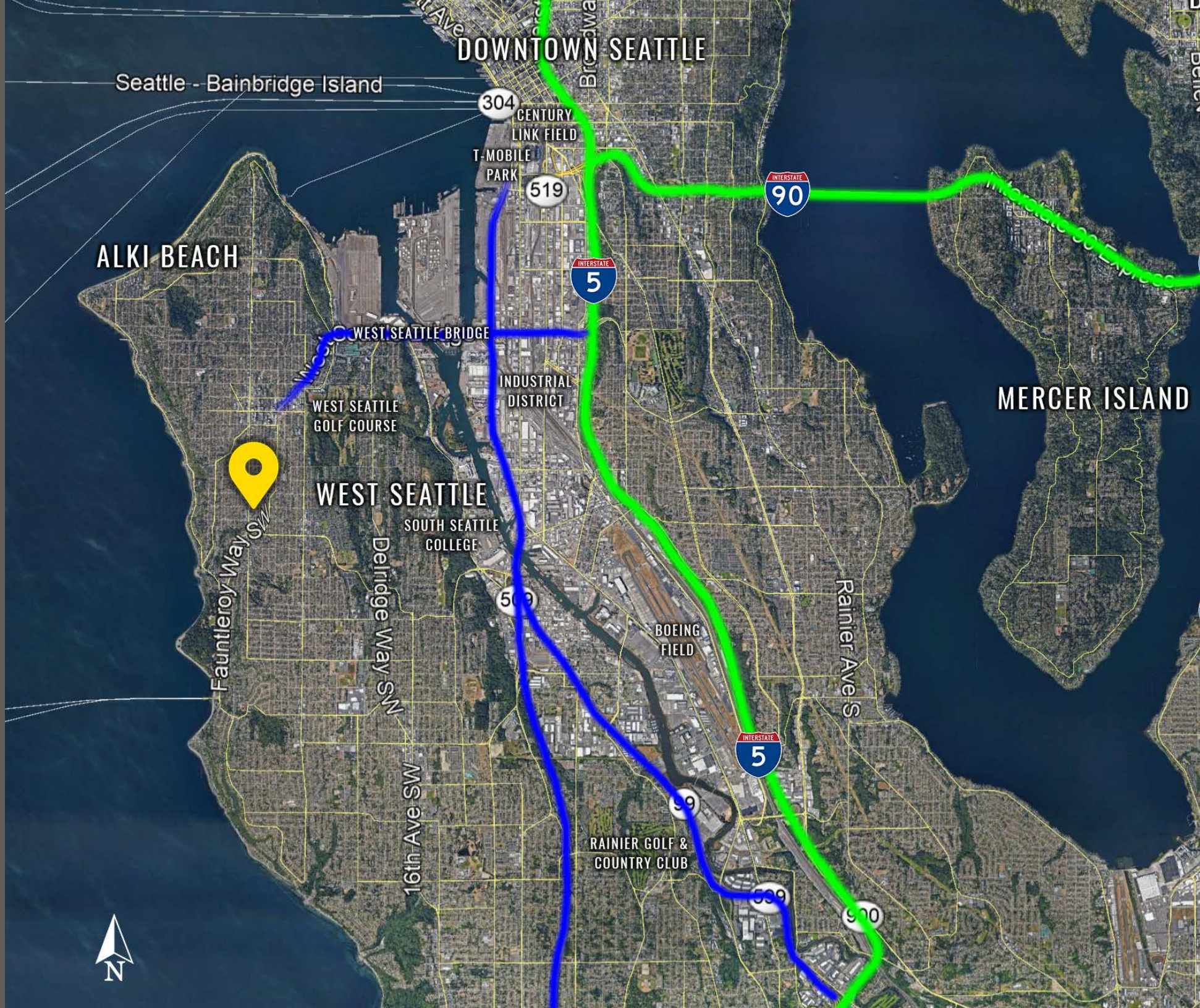


15,657 CPD
at Intersection



Located in the heart
of West Seattle

ACCESS TO MAJOR ARTERIALS





WEST SEATTLE is a laid-back residential area. The sandy strip of Alki Beach is popular with volleyball players, kayakers and sunbathers, while its coastal path has views of Puget Sound and the Seattle skyline. West Seattle Junction is the area's commercial heart, with casual eateries, coffeehouses and funky shops.

TACOMA | KIRKLAND | PORTLAND | SEATTLE



RELATIONSHIP FOCUSED. RESULTS DRIVEN.

TIM WEBER

253.471.5502
tweber@firstwesternproperties.com

DON WHITTLES

253.471.5509
dwhittles@firstwesternproperties.com

BLAKE WEBER

253.284.3646
bweber@firstwesternproperties.com



First Western Properties—Tacoma Inc. | 253.472.0404
6402 Tacoma Mall Blvd, Tacoma, WA 98409 | fwp-inc.com

© First Western Properties, Inc. DISCLAIMER: The above information has been secured from sources believed to be reliable, however, no representations are made to its accuracy. Prospective tenants or buyers should consult their professional advisors and conduct their own independent investigation. Properties are subject to change in price and/or availability without notice.