

Monarch Apartments

3710 S Angeline Street, Seattle WA

1,000 SF - 1,880 SF

Boutique Columbia City Retail and
Restaurant Spaces For Lease



COLUMBIA CITY MAP



Welcome to Columbia City

Columbia City is a diverse, highly walkable neighborhood with vibrant retail synergy and high quality of life. Anchored by PCC Community Markets and the esteemed Ark Lodge Cinema, the neighborhood boasts some of Seattle's most celebrated retail and food & beverage operators including Geraldine's Counter, Columbia City Bakery, La Medusa, Marination, Olympia Coffee Roasting, and Molly Moon's to name a few.

Demographics - 8 Min Drive



75,051
Population

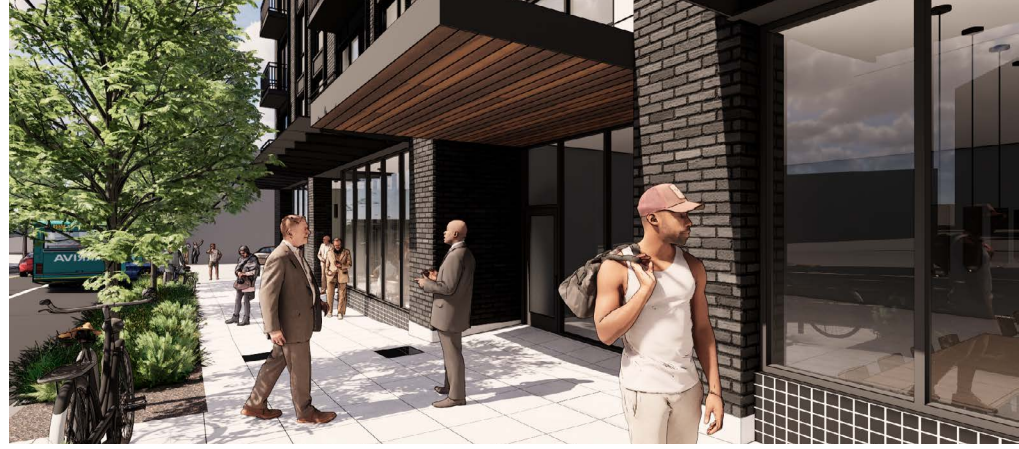
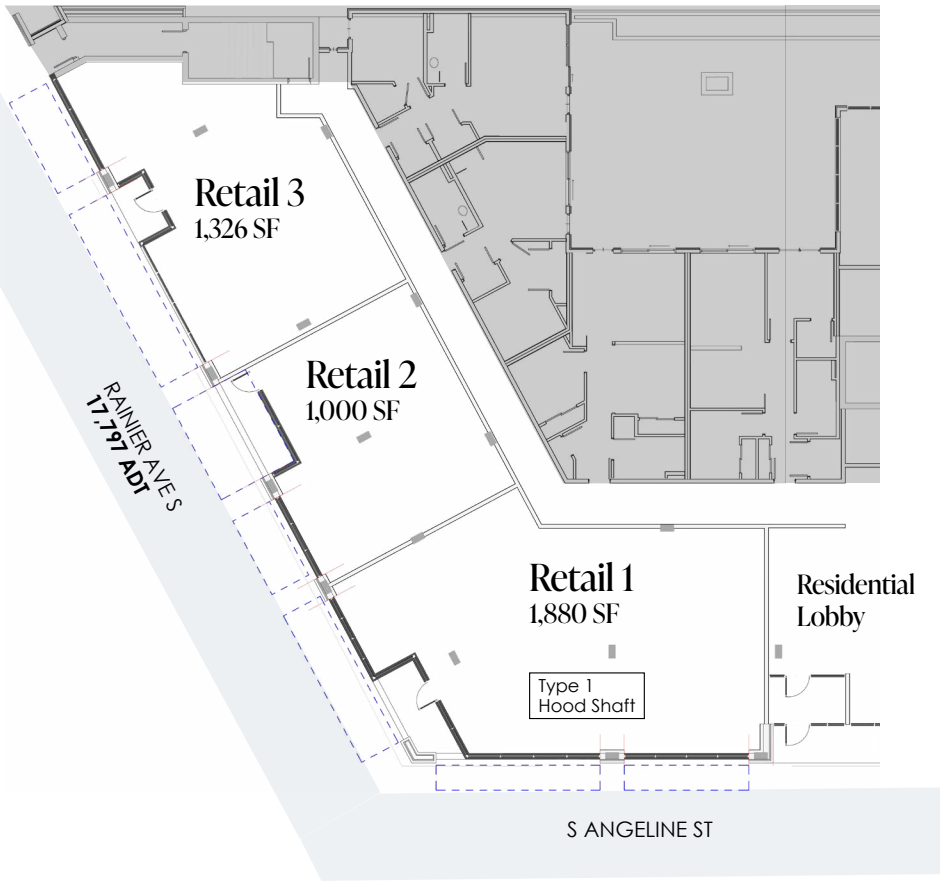


28,426
Households



\$151,123
Avg. Household
Income





Project Details:

Located in the heart of historic Columbia City, the Monarch apartments feature 73 luxury apartments over three retail spaces perfect for restaurant, coffee, service or retail use. Retail 1 features excellent visibility at the corner of Rainier Ave S and S Angeline street and can be vented for type 1 hood.

Contact for Leasing Details

Eric Zuehlsdorff
808.221.1134
eric@real-retail.net

Maria Royer
206.464.0600
mroyer@real-retail.net

Available:

Retail 1: 1,880 SF
2: 1,000 SF
3: 1,326 SF

NNNs: \$9.00 PSF

Rent: Call For Rates

Availability..... Immediately

This information supplied herein has been secured from sources believed to be reliable; however, no representations are made to its accuracy. Prospective tenants or buyers should consult their professional advisors and conduct their own independent investigation. Properties are subject to change in price and/or availability without notice.